

# STUDIO APARTMENT BERKSHIRE HOUSE

Type O / Floors: 3-10 / 323 sqft / 01

## Living Room

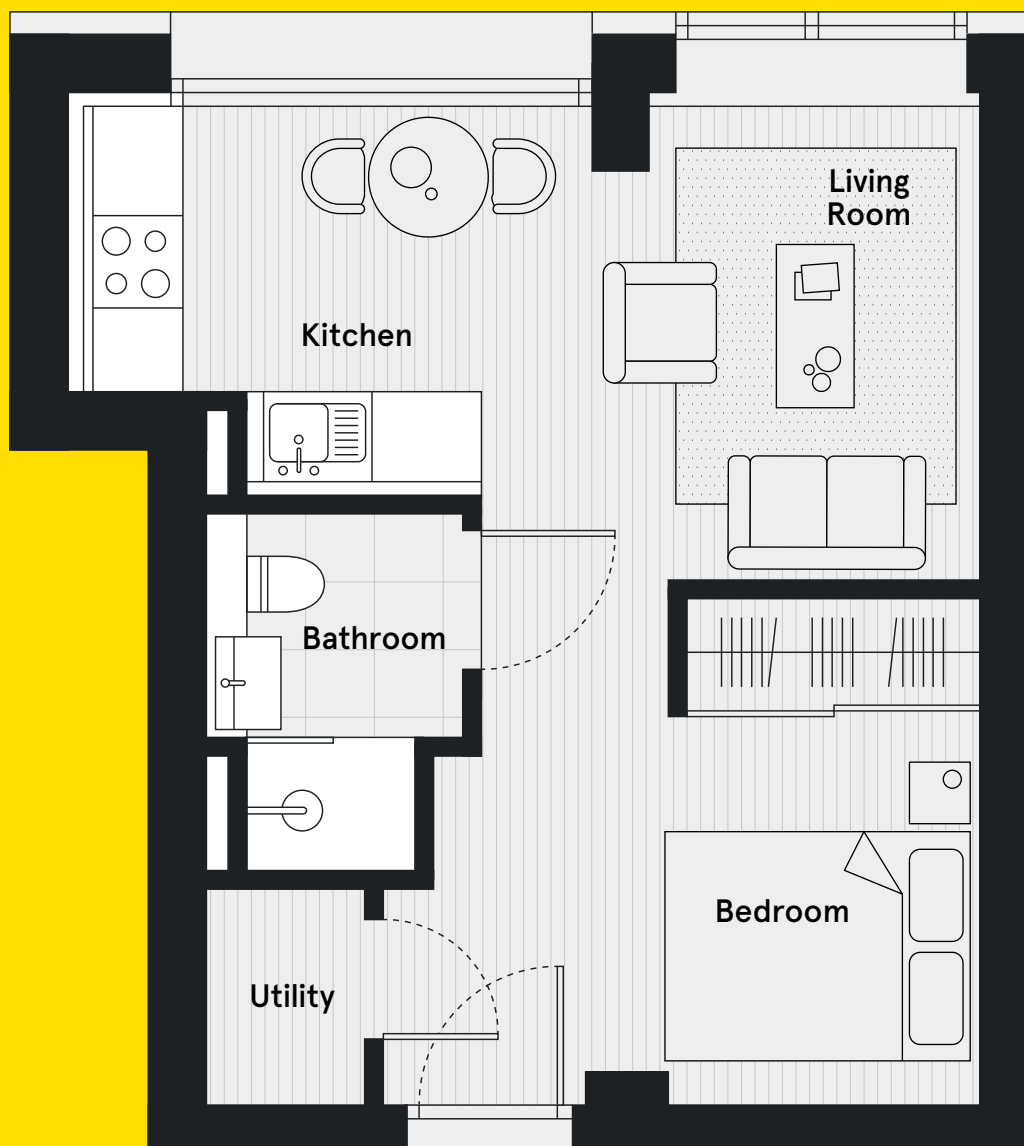
Sofa, armchair, coffee table, side table & rug.

## Kitchen

Bistro table (2 seater) & 2 x dining chairs.

## Bedroom

King-size bed (5ft) with mattress & under-bed storage, built-in wardrobe & bedside table.



0800 2100 200  
berkshirehouse@essentialliving.co.uk  
www.essentialliving.co.uk



**Berkshire  
House**

Maidenhead

# STUDIO APARTMENT BERKSHIRE HOUSE

Type T / Floors: 11-13 / 344 sqft / 03

## Living Room

Sofa, coffee table, media cabinet & rug.

## Kitchen

Bistro table (2 seater) & 2 x dining chairs.

## Bedroom

King-size bed (5ft) with mattress & under-bed storage, wardrobe & 2 x bedside tables.



0800 2100 200  
berkshirehouse@essentialliving.co.uk  
www.essentialliving.co.uk



**Berkshire  
House**

Maidenhead

# STUDIO APARTMENT BERKSHIRE HOUSE

Type M / Floors: 3-13 / 318 sqft / 02

## Living Room

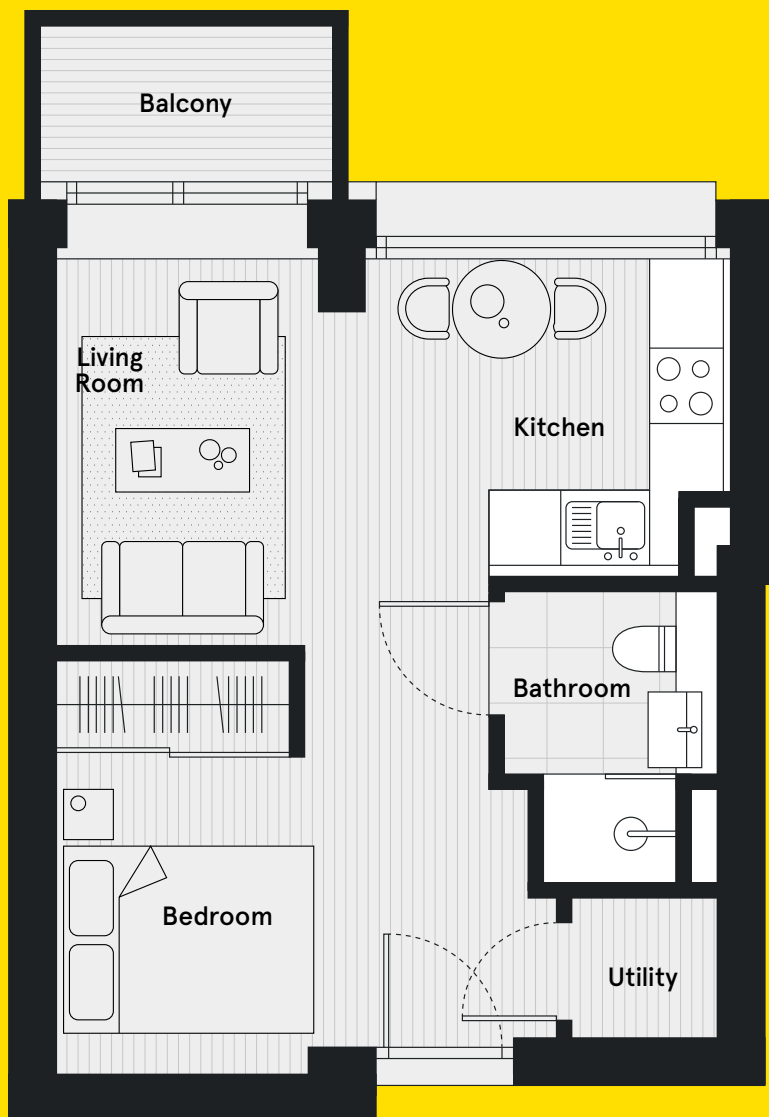
Sofa, armchair, coffee table & rug.

## Kitchen

Bistro table (2 seater) & 2 x dining chairs.

## Bedroom

King-size bed (5ft) with mattress & under-bed storage, built-in wardrobe & bedside table.



0800 2100 200  
berkshirehouse@essentialliving.co.uk  
www.essentialliving.co.uk



**Berkshire  
House**

Maidenhead

# STUDIO APARTMENT BERKSHIRE HOUSE

Type K / Floor: 2 / 404 sqft / 04

## Living Room

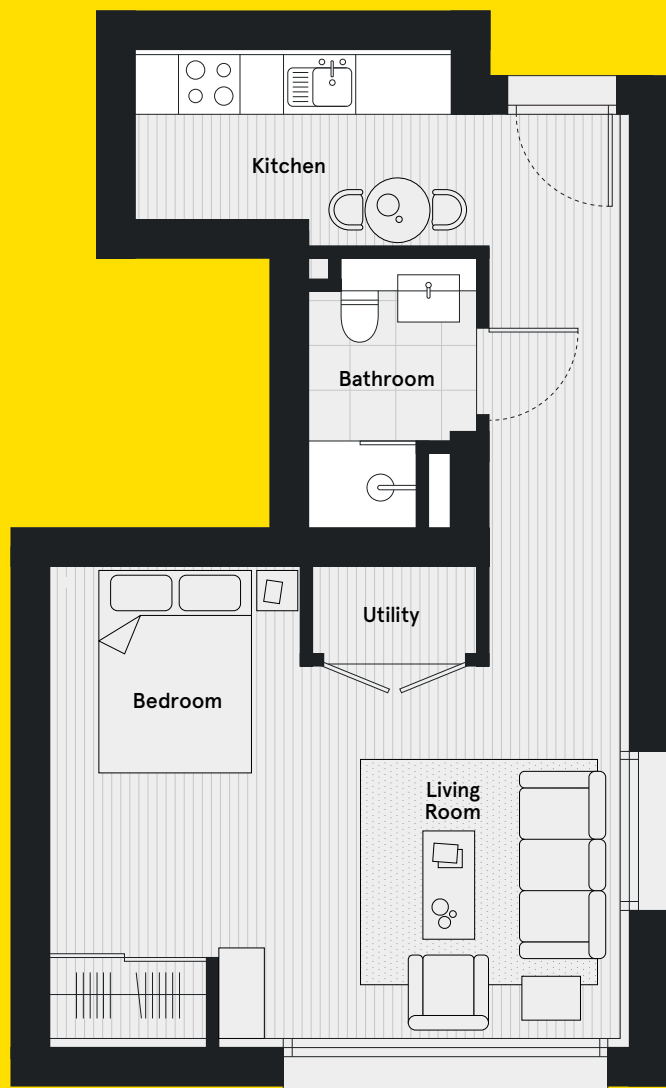
Sofa, armchair, media unit, coffee table, side table & rug & media cabinet.

## Kitchen

Bistro table (2 seater) & 2 x dining chairs.

## Bedroom

King-size bed (5ft) with mattress & under-bed storage, built-in wardrobe & bedside table.



0800 2100 200  
berkshirehouse@essentialliving.co.uk  
www.essentialliving.co.uk



**Berkshire  
House**

Maidenhead

# STUDIO APARTMENT BERKSHIRE HOUSE

Type N / Floors: 3-10 / 312 sqft / 03

## Living Room

Sofa, armchair, coffee table, media unit & rug.

## Kitchen

Bistro table (2 seater) & 2 x dining chairs.

## Bedroom

King-size bed (5ft) with mattress & under-bed storage & 2 x bedside tables.



0800 2100 200  
berkshirehouse@essentialliving.co.uk  
www.essentialliving.co.uk



**Berkshire  
House**

Maidenhead

# STUDIO APARTMENT BERKSHIRE HOUSE

Type R / Floors: 11-13 / 318 sqft / 01

## Living Room

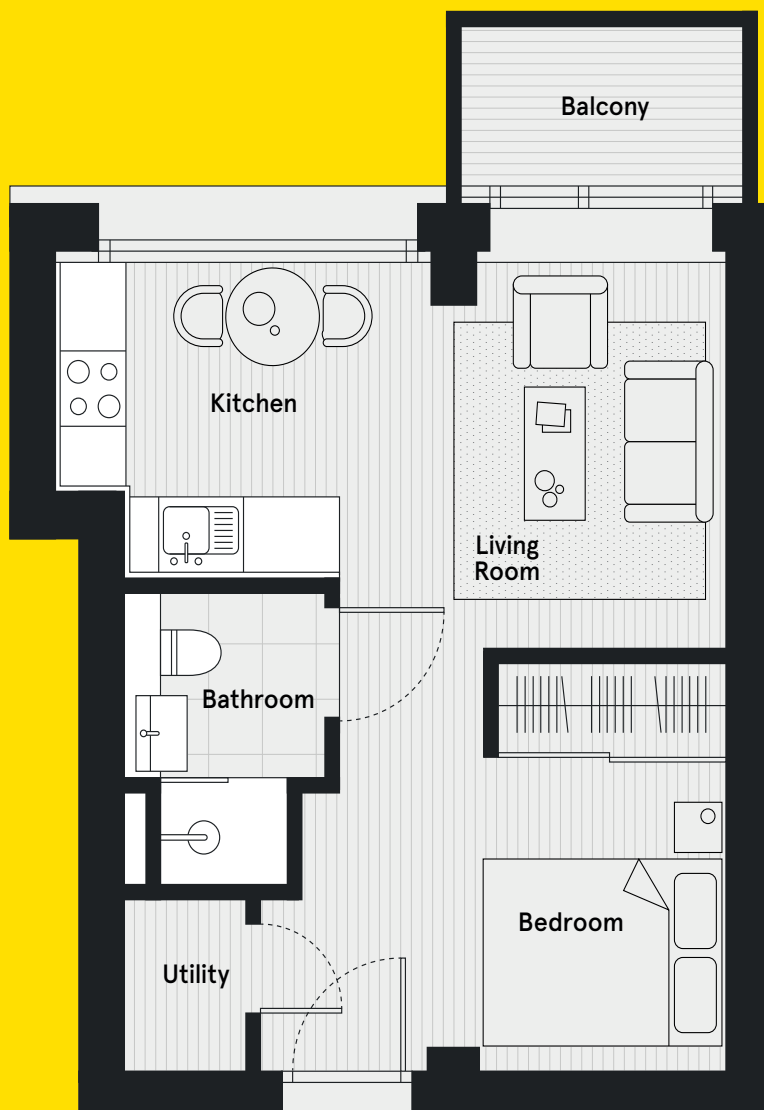
Sofa, armchair, coffee table & rug.

## Kitchen

Bistro table (2 seater) & 2 x dining chairs.

## Bedroom

King-size bed (5ft) with mattress & under-bed storage, bedside table & rug.



0800 2100 200  
berkshirehouse@essentialliving.co.uk  
www.essentialliving.co.uk



**Berkshire  
House**

Maidenhead