

1-BED APARTMENT VANTAGE POINT

Type 01 / Floors: 1-15 / 611-612 sqft

Living Room

Sofa, airchair, coffee table, rug, storage wall & side table.

Kitchen

Dining table (2 seater) & 2 x dining chairs.

Bedroom

King-size bed (5ft) with mattress, 2 x bedside tables, dressing table, upholstered stool & rug.



0800 2100 200
vantagepoint@essentialliving.co.uk
www.essentialliving.co.uk

**Vantage
Point**
Archway

1-BED APARTMENT VANTAGE POINT

Type 02 / Floors: 1-15 / 576-580 sqft

Living Room

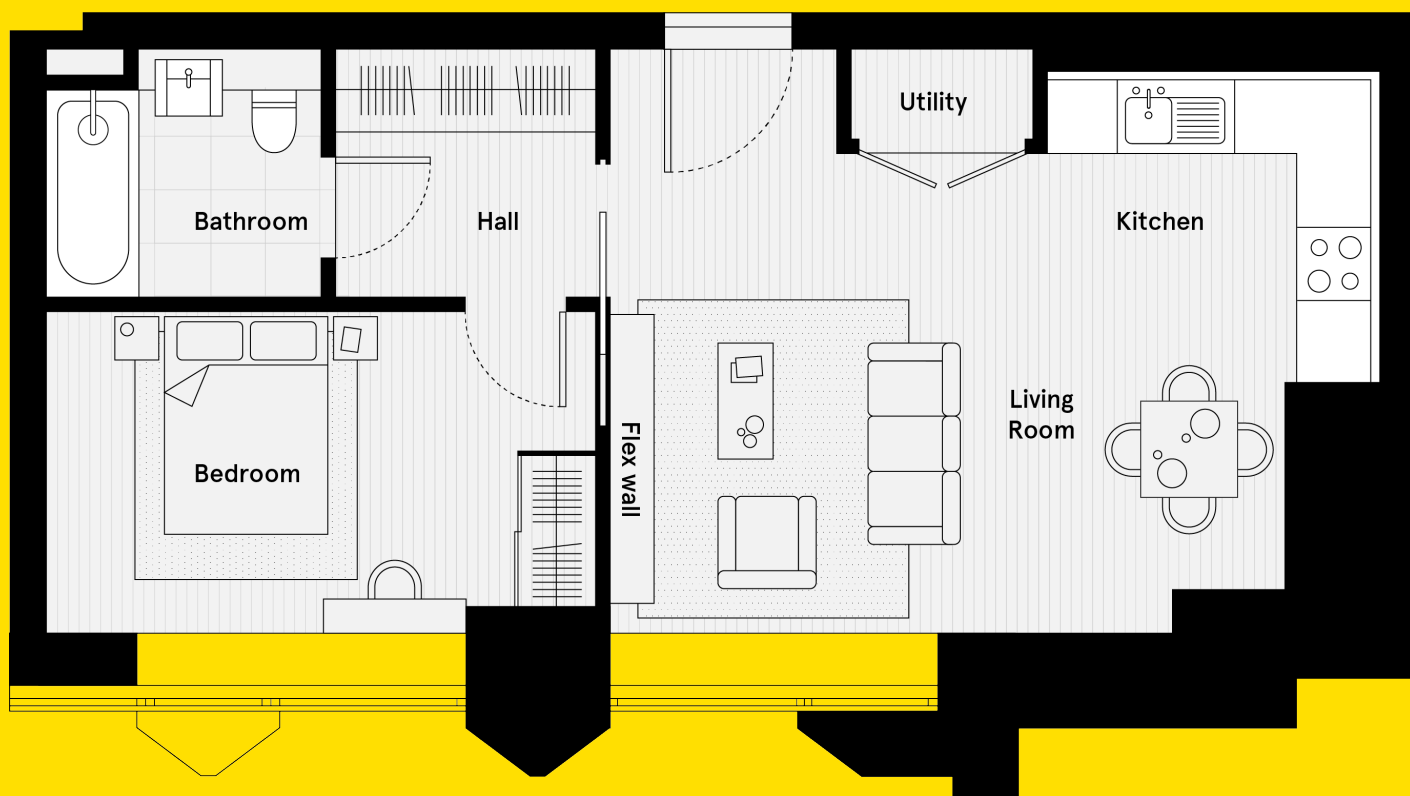
Sofa, airchair, coffee table, rug, storage wall & side table.

Kitchen

Dining table (4 seater) & 4 x dining chairs.

Bedroom

King-size bed (5ft) with mattress, 2 x bedside tables, dressing table, upholstered stool & rug.



0800 2100 200
vantagepoint@essentialliving.co.uk
www.essentialliving.co.uk

 **Vantage
Point**
Archway

1-BED APARTMENT VANTAGE POINT

Type 03 / Floors: 2-14 / 566 sqft

Living Room

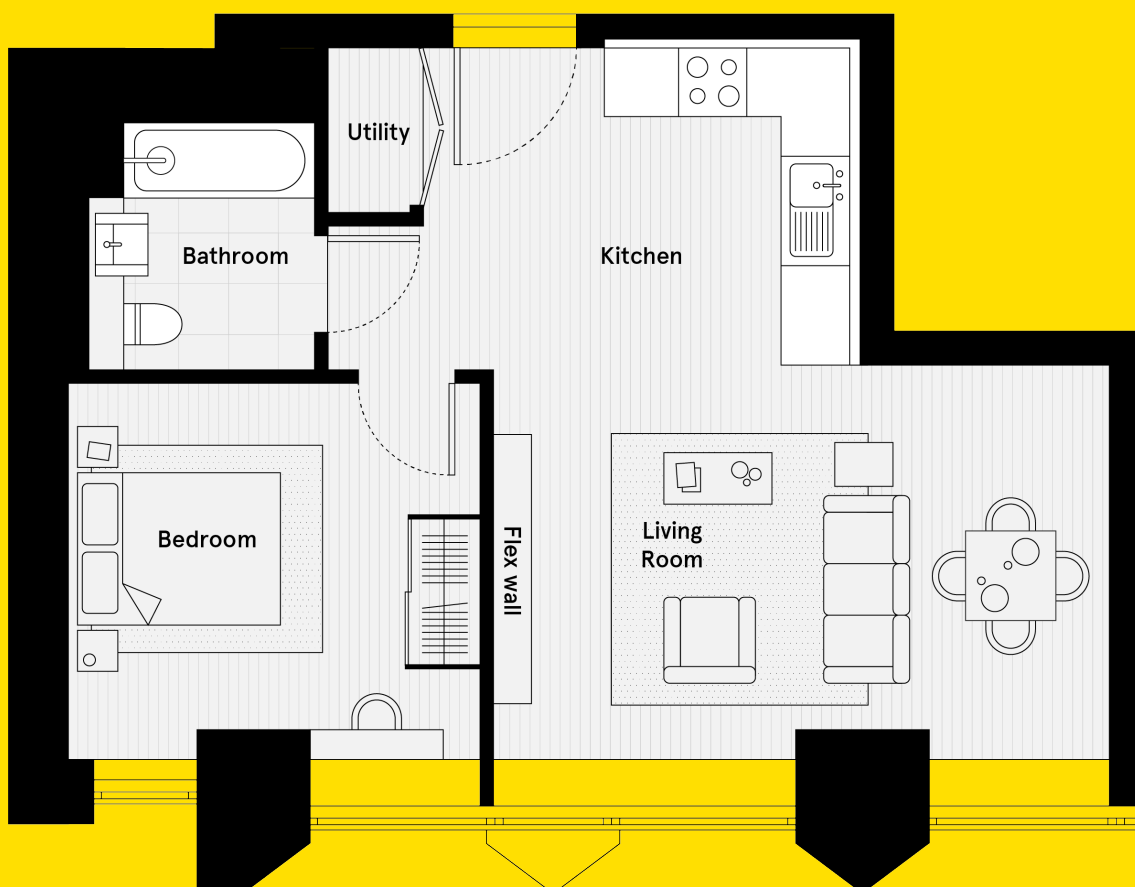
Sofa, airchair, coffee table, rug, storage wall & side table.

Kitchen

Dining table (4 seater) & 4 x dining chairs.

Bedroom

King-size bed (5ft) with mattress, 2 x bedside tables, dressing table, upholstered stool & rug.



0800 2100 200
vantagepoint@essentialliving.co.uk
www.essentialliving.co.uk

1-BED APARTMENT VANTAGE POINT

Type 09 / Floors: 2-15 / 600 sqft

Living Room

Sofa, airchair, coffee table, rug, storage wall & side table.

Kitchen

Dining table (4 seater) & 4 x dining chairs.

Bedroom Area

King-size bed (5ft) with mattress, 2 x bedside tables, dressing table, upholstered stool & rug.



0800 2100 200
vantagepoint@essentialliving.co.uk
www.essentialliving.co.uk